

Fluid Management Plastic Components Catalog



Material Abbreviations

ABS	Acrylonitrile Butadiene Styrene Copolymer	PC	Polycarbonate
BS	Butadiene Styrene Rubber	PES	Polyether Sulfone
PIBI	Butyl Rubber	PE	Polyethylene
CHDM	Cyclohexanedimethanol	PET	Polyethylene Terephthalate
COPE	Copolyester	PI	Polyimide
EPDM	Ethylene Propylene Terpolymer Rubber	PP	Polypropylene
EVA	Ethylene Vinyl Acetate	PS	Polystyrene
HDPE	High Density Polyethylene	PSU	Polysulfone
HIPS	High Impact Polystyrene	PTFE	Polytetrafluoroethylene
PI	Polyisoprene		
LDPE	Low Density Polyethylene	PU	Polyurethane
MABS	Methyl Methacrylate ABS	PVA	Polyvinyl Acetate
NPRN	Neoprene	PVC	Polyvinyl Chloride
NBR	Nitrile Butadiene Rubber	SS	Stainless Steel
PETG	PET modified with CHDM	SBR	Styrene Butadiene Rubber
POM	Polyacetal	TPE	Thermoplastic Elastomer
PA	Polyacrylate	TPR	Thermoplastic Rubber
PBT	Polybutylene Terephthalate		

Metric Conversions

When You Know	Multiply By	To Find
teaspoon (tsp)	5	milliliters (ml)
tablespoon (Tbsp)	15	milliliters (ml)
fluid ounces (fl oz)	30	milliliters (ml)
cups (c)	0.24	liters (L)
pints (pt)	0.47	liters (L)
milliliters (ml)	0.03	fluid ounces (fl oz)
liters (L)	2.11	pints (pt)
liters (L)	1.06	quarts (qt)

* = Information Available Upon Request

Table of Contents

Assemblies.....	6
Burette Assemblies	6
Extension Sets	6
Bags	7
Blown Film Bags	7
Caps	8
Double Dead Enders	8
Female Luer Caps Non-Vented.....	8
Female Luer Caps Vented	9
Male Luer Caps Non-Vented	10
Male Luer Caps Vented.....	10
Miscellaneous Caps	11
Check Valves	12
Check Valves.....	12
In-line Check Valves with Luers.....	13
Manifold Check Valves	13
Clamps.....	14
Holding Clips.....	14
Non-Reopening Clamps	14
On-Off Clamps	14
Pinch/Ratchet Clamps.....	15
Roller Clamps.....	17
Slide Clamps	18
Connectors	19
5 to 1, 6 to 1.....	19
Adaptors.....	19
Bag Ports.....	20
Breakable Connectors.....	21
Bowl Connectors	21
ENFIT	21

* = Information Available Upon Request

Large Bore Female	22
Large Bore Male.....	23
Multi-Way Connectors.....	24
Pump Connectors.....	24
Reducers.....	25
Suction Connectors	25
T-Connectors.....	26
Y-Connectors Parallel.....	26
Y-Connectors Split.....	27
Drip Chambers	29
Covers.....	29
Drip Chamber Assembly Vented.....	29
Drip Chambers.....	30
Filters.....	31
Filters.....	31
IV Filters.....	31
Injection Sites/Ports.....	32
Luers.....	32
Pre-Slit/Swabable Needle Free.....	33
Y-Site.....	34
Luers.....	35
Female Luers.....	35
Barbed Female Luers.....	37
Locking Rings.....	37
Male Luers.....	38
Barbed Male Luers.....	40
Other.....	42
Cups.....	42
Other.....	42
Pillow Chambers.....	43
Pillow Chambers.....	43
Safety Products.....	44
Scalpels.....	44

* = Information Available Upon Request

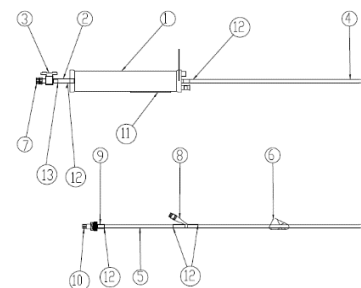
Chambers	45
Chamber Assemblies	45
Chamber Bodies	45
Chamber Caps	45
Drip Chamber Assembly Non-Vented	46
Drip Chamber Assembly Vented	46
Drip Chamber Assembly with Spike Non-Vented	47
Drip Chamber Assembly with Spike Vented	47
Spikes	48
Non-Vented Spikes	48
Spike Caps	49
Vented Spikes	49
Stopcocks	51
Multi-Way	51
Transducer Protectors	52
Transducer Protectors	52
Index	53

* = Information Available Upon Request

Assemblies

Burette Assemblies

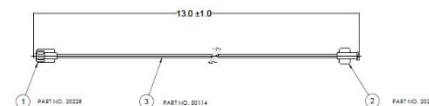
PART NUMBER	COLOR	MATERIAL/ STERILIZATION/ QUANTITY	DESCRIPTION
21424	*	CAP- PI, ABS. HANGER- PE. AIR FILTER-PP TOP CAP- ABS. BODY- TENITE, PROPIONATE. BOTTOM CAP- ABS. / EtO / 100	BURRETTE CHAMBER, 100 ML, 20 DROP
70006	*	* / EtO / 72	100ML, 20 DROP, BURRETTE ASSY



70006

Extension Sets

PART NUMBER	COLOR	MATERIAL/ STERILIZATION/ QUANTITY	DESCRIPTION
70020	Clear, Blue	PC / Gamma & EtO / 1200	13" EXTENSION SET ASSEMBLY WITH FEMALE LUERS
70050	Clear	PC + PVC / 300	13 INCH EXTENSION SET ASSEMBLY, DEHP FREE
20268	Clear	PVC + PC / 1600	EXTENSION LINE ASSEMBLY WITH MALE/FEMALE LUER LOCKS 300 PSI, 20.7 BAR
20278	Clear	PVC, PC / 1600	EXTENSION LINE ASSEMBLY WITH MALE AND FEMALE LUER LOCKS 15 PSI, 1 BAR



70050

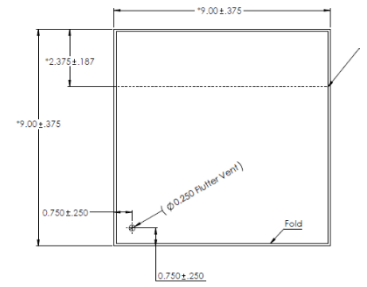
* = Information Available Upon Request

Bags

Blown Film Bags

PART NUMBER	COLOR	MATERIAL/ STERILIZATION/ QUANTITY	DESCRIPTION
21768	*	PE / EtO / 3000	9" X 9" PERFORATED BAG, 12 PERF/IN- 0.50 TIE, UNPRINTED

Additional customizable flexible packaging available upon request.

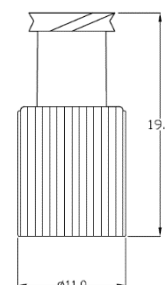


21768

Caps

Double Dead Enders

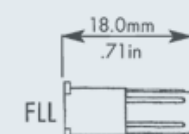
PART NUMBER	COLOR	MATERIAL/ STERILIZATION/ QUANTITY	DESCRIPTION
21459	*	PP / EtO / 15000	DOUBLE DEADENDER, MALE/FEMALE LUER LOCK, SINGLE- THREAD



21459

Female Luer Caps Non-Vented

PART NUMBER	COLOR	MATERIAL/ STERILIZATION/ QUANTITY	DESCRIPTION
20356	Natural	PE / Gamma & EtO / 40000	NON-VENTED FEMALE LUER LOCK CAP
20625	Natural	PVC / EtO / 5000	CAP, FEMALE DIN, NON-VENTED, SOFT PVC
21346	White	PP / Gamma & EtO / 10000	CAP, FEMALE DIN, NON-VENTED
20447	Yellow	PP / Gamma & EtO / 20000	CAP, FEMALE LUER, NON-VENTED
20448	White	PP / Gamma & EtO / 5000	
20479	Red	PE / Gamma & EtO / 50000	
21867	Red	HDPE / Gamma & EtO / 50000	
21673	Blue	PE / Gamma & EtO / 20000	CLOSED FEMALE LUER LOCK CAP
21672	Red	PE / Gamma & EtO / 20000	



std.packing: 20,000 pcs

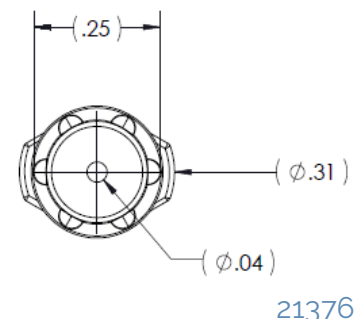
20448

* = Information Available Upon Request

21613	*	ABS / EtO / *	FEMALE LUER LOCK CAP W/WINGS, NON-VENTED
-------	---	---------------	--

Female Luer Caps Vented

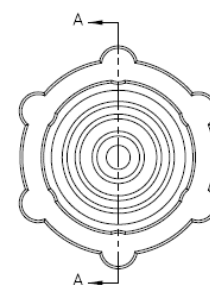
PART NUMBER	COLOR	MATERIAL/ STERILIZATION/ QUANTITY	DESCRIPTION
21376	White	PP / Gamma & EtO / 20000	CAP, FEMALE LUER, VENTED
21342	Blue	PP / Gamma & EtO / 50000	
21682	Light Blue	LDPE / Gamma & EtO / 20000	FEMALE LUER BREATHER CAP (TWIST ON)
21790	White	ZYTEL / * / *	FEMALE LUER THREAD STYLE CAP
21634	Red	PVC / EtO / 20000	VENTED FEMALE LUER LOCK CAP, DEHP-FREE
21637	Blue	ABS / EtO / 20000	
20480	Natural	PE / Gamma & EtO / 40000	VENTED FEMALE LUER LOCK CAP
20326	Natural	PE / Gamma & EtO / 40000	
20373	Red	PVC / EtO / 20000	
20474	Blue	PVC / EtO / 20000	
21599	*	PC / EtO / 18000	



* = Information Available Upon Request

Male Luer Caps Non-Vented

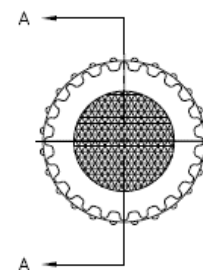
PART NUMBER	COLOR	MATERIAL/ STERILIZATION/ QUANTITY	DESCRIPTION
20449	Blue	ABS / Gamma & EtO / 5000	CAP, MALE LUER, NON-VENTED
20450	Yellow	ABS / Gamma & EtO / 5000	
21334	White	ABS / Gamma & EtO / 30000	
34418403	White	ABS / Gamma & EtO / 30000	
C033408403	White	ABS / Gamma & EtO / 40000	
21723	Blue	PVC / Gamma & EtO / 10000	LUER THREAD COVER, NO STEM
21386	Yellow	ABS / Gamma & EtO / 9000	MALE CAP, NON- VENTED
21622	*	PC / EtO / 20000	
20384	Blue	ABS / EtO / 20000	CLOSED MALE LUER LOCK CAP
20459	White	PP / EtO / 20000	
20573	White	ABS / EtO / 20000	



20449

Male Luer Caps Vented

PART NUMBER	COLOR	MATERIAL/ STERILIZATION/ QUANTITY	DESCRIPTION
21677	White	LDPE, γ , EtO, 40000	LDPE / Gamma & EtO / 40000
33508200	*	PE, γ , EtO, 14000	PE / Gamma & EtO / 14000
20623	Natural	HDPE, EtO, 10000	HDPE / EtO / 10000



21677

* = Information Available Upon Request

20255	Natural	PP / EtO / 20000	VENTED MALE LUER LOCK CAP
20308	Blue	PP / EtO & Steam / 20000	
20390	Natural	PP / Gamma & EtO / 20000	
20476	Red	PP / EtO / 20000	

Miscellaneous Caps

PART NUMBER	COLOR	MATERIAL/ STERILIZATION/ QUANTITY	DESCRIPTION
21517	Clear	PLASTISOL / EtO / *	3MM CAP
21518	Clear	PLASTISOL / EtO / *	5MM CAP
18908200	Natural	PE / Gamma & EtO / 10000	CAP FOR SPIKE VENTED
25818200	Natural	PE / Gamma & EtO / 12000	
21175	Natural	LDPE / Gamma & EtO / 7500	CAP, ENTERAL CONNECTOR, NON-VENTED
20220	Natural	LDPE / Gamma & EtO / 15000	CAP, VENTED, POLYETHYLENE
60007	Clear	VINYL / * / 5000	COVER, NON-VENTED
8109789000	Light Blue	HDPE, Gamma, 5000	INFUSION CAP, 1-WAY
21705	Clear	PP / * / 8	MALE PORT, COVER, PP CLEAR
21410	Blue	VINYL / EtO / 10000	VENTED CAP
21836	Blue	VINYL / EtO / *	
21560	Clear	PLASTISOL / EtO / *	VENTED CAP FOR TUBE OD 1/8" X 1/32" (2-WAY)
8305170000	Natural	PP / EtO & Steam / 20000	VENTED CAP II
21408	*	ABS / EtO / *	MALE LUER LOCK CAP FOR 3.2MM OD TUBE



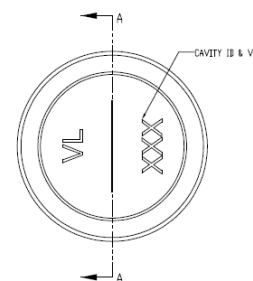
21410

* = Information Available Upon Request

Check Valves

Check Valves

PART NUMBER	COLOR	MATERIAL/ STERILIZATION/ QUANTITY	DESCRIPTION
21528	*	ABS / EtO / 10000	CHECK VALVE FOR 4.1MM TUBING, LOW PRESSURE (0.015 TO 0.174 PSI)
21794	Transparent	ABS / * / *	CHECK VALVE SOCKET FOR .094" (2.4MM) OD TUBING TO TUBING
21824	Blue Transparent	SAN / Gamma & EtO / *	CHECK VALVE V2000 V WITH FEMALE LUER LOCK, SAN TRANSPARENT, AND TUBING FITMENT 3.0X4.1+2.0 NEG, MABS
21825	Blue Transparent	SAN / Gamma & EtO / *	CHECK VALVE V2000 V WITH FEMALE LUER-LOCK, SAN TRANSPARENT AND TUBING FITMENT 4.1NEG., MABS
21823	Blue Transparent	SAN / Gamma & EtO / *	CHECK VALVE V2000 V WITH FEMALE LUER-LOCK, SAN TRANSPARENT AND MALE LUER-LOCK SAN
60016	Blue	P / * / 5187	L-370 VALVE
20445	Natural	PC / Gamma & EtO / 8000	SWABABLE VALVE WITH MALE LUER
21755	Blue, White	PVC / Gamma & EtO / 2500	VALVE, TWISTED TUBE END

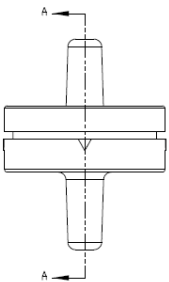


60016

* = Information Available Upon Request

In-line Check Valves with Luers

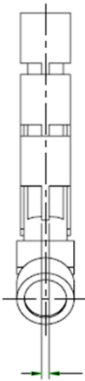
PART NUMBER	COLOR	MATERIAL/ STERILIZATION/ QUANTITY	DESCRIPTION
21786	Transparent	SILICONE / EtO / *	CHECK VALVE LUER LOCK FEMALE LUER LOCK MALE (OPENING PRESSURE=6 MBAR)
21610	*	SAN / EtO / 10000	CHECK VALVE, MALE AND FEMALE LUER LOCK
20305	White	ABS / Gamma & EtO / 10000	CHECK VALVE, W/ MALE LUER & LUER LOCK, GAMMA
21727	White, Clear, Blue	ACRYLIC / Gamma & EtO / *	INLINE CHECK VALVE



21727

Manifold Check Valves

PART NUMBER	COLOR	MATERIAL/ STERILIZATION/ QUANTITY	DESCRIPTION
60048	Clear	PVC / * / 600	MANIFOLD, 3 TO 1



60048

* = Information Available Upon Request

Clamps

Holding Clips

PART NUMBER	COLOR	MATERIAL/ STERILIZATION/ QUANTITY	DESCRIPTION
21694	Clear	VINYL / 3000	2-HOLE CLIP NICKEL PLATED STEEL AND EXTENDED CLEAR VINYL STRAP



21694

Non-Reopening Clamps

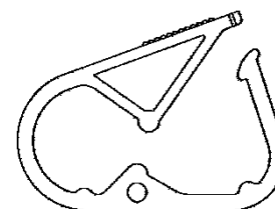
PART NUMBER	COLOR	MATERIAL/ STERILIZATION/ QUANTITY	DESCRIPTION
20436	Blue	PP / EtO / 2500	NON-REOPENING CLAMP FOR TUBES 3.5 X 5.5MM & 4.8 X 6.8MM .138 X .217IN & .189 X .268IN
21423	Blue	PP / EtO / 4000	NON-REOPENING CLAMP FOR .127" ID X .187" OD TUBE



20436

On-Off Clamps

PART NUMBER	COLOR	MATERIAL/ STERILIZATION/ QUANTITY	DESCRIPTION
21508	Yellow	PP / EtO / 5000	ON-OFF MINI CLAMP FOR TUBES OD 2.0-2.5-3.0-4.1-5.5MM
21584	Black	PP / EtO / 5000	
21454	Green	PP / EtO / 5000	

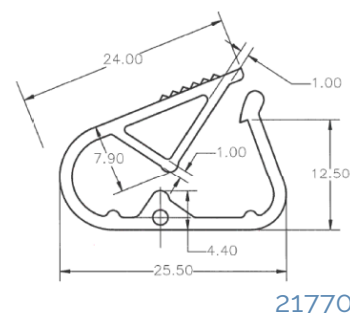


21508

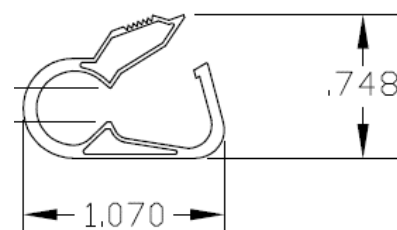
* = Information Available Upon Request

Pinch/Ratchet Clamps

PART NUMBER	COLOR	MATERIAL/ STERILIZATION/ QUANTITY	DESCRIPTION
21770	Natural	PP / Gamma & EtO / 10000	PINCH CLAMP FOR .118" (3.0MM) OD TUBE
21651	*	PP / EtO / 5000	PP30, CLAMP
21652	*	PP / EtO / 2500	PP40, CLAMP
200320	Natural	PP / * / *	CLAMP BIG
60074	Red, White	ACETAL / EtO / 7500	CLAMP, LARGE RATCHET
21626	Red	PP / Gamma, EtO & Steam / 2000	CLAMP, RATCHET, SMALL
21627	Natural	PP / Gamma, EtO & Steam / 2000	
20262	White	PP / EtO / 5000	LARGE RATCHET CLAMP ON/OFF
21611	*	PP / EtO / 5000	LARGE TWO-STEP RATCHET CLAMP FOR 6.8 MM OD TUBES
20724	Blue	PP / EtO / 5000	ON-OFF MEDI CLAMP FOR TUBES O.D. 5.5MM - 6.8MMN .217IN - .268IN
20725	White	PP / EtO / 5000	
21413	Yellow	PP / EtO / 5000	
20722	White	PP / * / *	ON-OFF MINI CLAMP FOR TUBES O.D. 2.0MM - 2.5MM - 3.0MM - 4.1MM .079IN - .098 - .118IN - .161IN
21337	Blue	PP / EtO / 5000	
21338	Red	PP / EtO / 5000	
20238	White	PP / Gamma, EtO & Steam / 12000	ON-OFF SMALL RATCHET CLAMP FOR TUBES O.D. 2.0-2.5-3.0-4.1-5.5MM; .079-.098-.118-.161-.217 IN
20239	Natural	ACETAL / EtO / 12000	



21770



21626

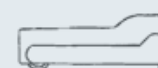
* = Information Available Upon Request

20260	Blue	PP / Gamma & EtO / 2000	RATCHET CLAMP, LG, 6 POS
20261	Red	PP / Gamma & EtO / 2000	
20252	White	PP / Gamma & EtO / 2000	RATCHET CLAMP, LG
20310	White	ABS / Gamma & EtO / 5000	RATCHET CLAMP, MINI, ON/OFF
20404	Yellow	ACETAL / EtO / 7500	RATCHET CLAMP, SM, ON/OFF
21414	Blue	ACETAL / EtO / 7500	
21404	Blue	PP / EtO / 8000	RATCHET CLAMP, SMALL, 2-5.5MM TUBE OD
21608	Red	PP / EtO / 8000	SMALL ON/OFF RATCHET CLAMP
60029	White	PP / Gamma & EtO / 10000	
60034	Green	PP / Gamma, EtO & E-Beam / 10000	SMALL ON/OFF RATCHET CLAMP
60035	Purple	PP / Gamma, EtO & E-Beam / 10000	
60036	Yellow	PP / Gamma, EtO & E-Beam / 10000	
60037	Red	PP / Gamma, EtO & E-Beam / 10000	
60038	Blue	PP / Gamma, EtO & E-Beam / 10000	
60044	White	PP / Gamma, EtO & E-Beam / 10000	



20252

Roller Clamps



std.packing: 5,000 pcs

21192

PART NUMBER	COLOR	MATERIAL/ STERILIZATION/ QUANTITY	DESCRIPTION
30170	White	ABS / Gamma & EtO / 2000	PRECISION ROLLER CLAMP ASSEMBLY FOR .110" X .157" TUBE
37018	Blue, White	ABS / EtO / *	PRECISION ROLLER CLAMP ASSEMBLY FOR .189" X .267" TUBE
21791	White, Neutral	PS, PE / * / 2500	ROLLER CLAMP ASSY X TUBE Ø 3.0X4.1
21267	White	ABS / Gamma & EtO / 2000	ROLLER CLAMP ASSY, FOR 2.51 X 3.6 MM
21198	White	ABS / Gamma & EtO / 2500	ROLLER CLAMP ASSY, HIGH PRECISION
20347	Blue, White	PS, ABS / EtO / 5000	ROLLER CLAMP ASSY, V
21564	*	POM / EtO / 2500	ROLLER CLAMP BODY FOR TUBING 4.8 X 6.8
30168-01	White	ABS / EtO / 2500	ROLLER CLAMP BODY/LARGE, WHITE, ABS
21192	White	PS / EtO / 5000	ROLLER CLAMP FOR TUBE O.D. 4.1MM/.161IN (ASSEMBLED)
21530	*	ACETAL / EtO / 10000	ROLLER CLAMP WHEEL
21765	Blue, White	ABS / EtO / 2500	ROLLER CLAMP, ASSEMBLED
21766	Red, White		
20337	Red	PP / Gamma & EtO / 20000	ROLLER WHEEL
20346	White	PP / EtO / 20000	ROLLER WHEEL
30168-02	White	ABS / EtO / 10000	ROLLER WHEEL /LARGE

* = Information Available Upon Request

Slide Clamps

PART NUMBER	COLOR	MATERIAL/ STERILIZATION/ QUANTITY	DESCRIPTION
60013	Natural	HDPE / Gamma & EtO / 5000	SLIDE CLAMP
20717	Blue	PP / Gamma, EtO & Steam / 10000	SLIDE CLAMP FOR TUBE ODS 2.0-2.5-3.0-4.1 MM
20401	White	HDPE / Gamma & EtO / 30000	SLIDE CLAMP FOR TUBES 2-2.5MM / .078-.099IN
20719	Blue	PP / EtO / 10000	SLIDE CLAMP FOR TUBES O.D. 5.5MM - 6.8MM .217IN - .268IN
21764	Blue	PP / EtO / 10000	SLIDE CLAMP, OPEN JAW
20291	Blue	HDPE / Gamma & EtO / 30000	SLIDE CLAMP, SMALL, OPEN
20311	White	PP / Gamma, EtO & Steam / 10000	SLIDE CLAMP



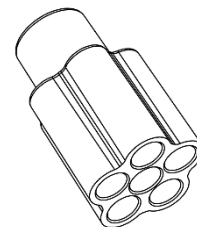
std.packing: 10,000 pcs

20719

Connectors

5 to 1, 6 to 1

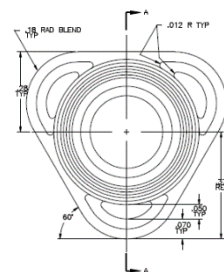
PART NUMBER	COLOR	MATERIAL/ STERILIZATION/ QUANTITY	DESCRIPTION
21700	Natural	PP / * / 2500	2 PC, 5 IN 1 CONNECTOR
21265	*	ABS / Gamma & EtO / 10000	CONNECTOR, 6 TO 1
60024	*	PC / Gamma & EtO / *	



60024

Adaptors

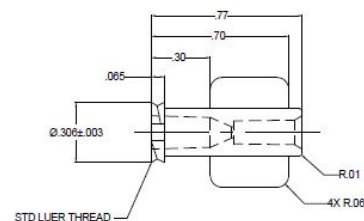
PART NUMBER	COLOR	MATERIAL/ STERILIZATION/ QUANTITY	DESCRIPTION
21844	Natural	PC / Gamma & EtO / *	1/4 PERFUSION ADAPTOR WITH LUER
21843	Clear	PC / Gamma & EtO / *	1/4 PERFUSION W/ NUT
21842	Clear	PC / Gamma & EtO / *	3/8 STRAIGHT
21841	Clear	PC / Gamma & EtO / *	3/8 X 1/2 RDCR. W/ LUER
60017	Blue	PVC / EtO / 2000	ADAPTOR, 1/4" ID
21225	Natural	COPE / Gamma & EtO / *	FEMALE LUER LOCK ADAPTOR FOR .078 OD TUBE, LIPID RESIST
21226	Natural	COPE / Gamma & EtO / 20000	FEMALE LUER LOCK ADAPTOR FOR .085 OD TUBE, LIPID RESIST
8107152	Natural, Red	PP / * / 5000	LATCH, SNAP-IN, LIBERTY-CONNECT



60017

* = Information Available Upon Request

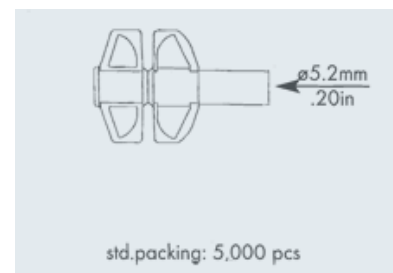
20227	Clear	PC / Gamma & EtO / 10000	LUER ADAPTOR, FEMALE, ANNEALED
20228	Clear	PC / Gamma & EtO / 10000	LUER ADAPTOR, MALE, ANNEALED
60014	Clear	PVC / * / 200000	REFLUX CONNECTOR, L-370
21702	Clear	PC / EtO / 1000	SBT_ELBOW
21733	Clear, White	PC / Gamma & EtO / *	SMART SITE, Y-BODY VALVE ASSEMBLY, 5100R
60018	Natural	PP / EtO / 10000	STRAIGHT THROUGH CONNECTOR WITH 500 SERIES BARBS, 1/4" (6.25MM) ID TUBING



20227

Bag Ports

PART NUMBER	COLOR	MATERIAL/ STERILIZATION/ QUANTITY	DESCRIPTION
37618000	Natural	PVC / Gamma & EtO / 10000	BAG PORT FOR TUBE OD 6.5MM/ .256IN
21760	Yellow, White, Red, Natural	PP / EtO / 1500	BAG SPIKE, VENTED DRIP, NON-PVC, UV BLOCKING, 15UM FILTER W/CAP
21722	Clear	PC / Gamma & EtO / 2000	SWABABLE BAG ACCESS PORT
20391	Clear	PVC / EtO / 5000	TWIST OFF SPIKE BAG PORT
21758	*	PVC / Gamma & EtO / 5000	TWIST-OFF BAG PORT W/PLUG, DEHP-FREE
21531	*	EVA / EtO / 5000	TWIST-OFF BAG PORT, 2-SLIT, SOFT EVA, DEHP-FREE
20221	Clear	COPOLYESTER / Gamma & EtO / 6000	Y PORT, SWABBABLE, 3 COPOLYESTER

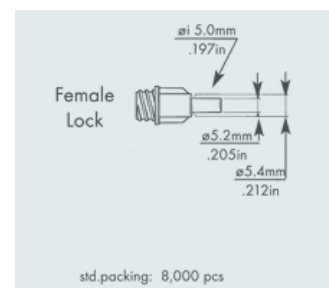


20391

* = Information Available Upon Request

Large Bore Female

PART NUMBER	COLOR	MATERIAL/ STERILIZATION/ QUANTITY	DESCRIPTION
20434	Clear	ABS / EtO / 8000	BIG BORE FEMALE LOCK CAP CONNECTOR TUBE I.D. OF 5MM/.197IN
20287	White	ABS / EtO / 10000	BIG BORE FEMALE LOCK CONNECTOR FOR EVA TUBE I.D. 4.8MM/.189IN
20992	White	ABS / EtO / 10000	
20290	White	ABS / EtO / 8000	BIG BORE FEMALE LOCK CONNECTOR PVC TUBE ID 4.8MM/.189IN
20990	White	ABS / Gamma & EtO / 10000	CLOSED FEMALE LOCK CAP, BIG BORE, NON-VENTED
20602	Clear	PVC / EtO / 5000	CONN, FEMALE, DIN, FOR 6.8 MM
26808000	*	PVC / Gamma, Beta & EtO / 9000	CONN, FEMALE, DIN, FOR 6.8 MM OD TUBE
21363	*	ABS / EtO / 10000	CONNECTOR, LARGE BORE, FEMALE, 8MM
21385	Yellow	ABS / EtO / 8000	FEMALE CONNECTOR, LARGE BORE FOR .236" TUBE
21667	*	* / * / 10000	FEMALE LUER LOCK CONNECTOR FOR 5.5MM TUBE OD

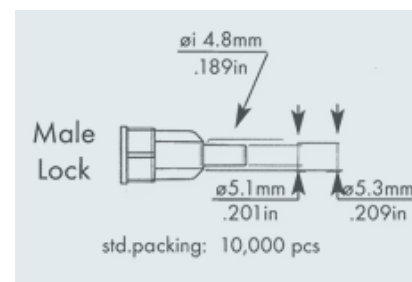


20434

* = Information Available Upon Request

Large Bore Male

PART NUMBER	COLOR	MATERIAL/ STERILIZATION/ QUANTITY	DESCRIPTION
20289	White	ABS / EtO / 7000	BIG BORE MALE LOCK CONNECTOR FOR PVC TUBE I.D. 4.8MM/.189IN
20987	White	ABS / EtO / 10000	BIG BORE MALE LOCK CONNECTOR FOR PVC TUBE I.D. 4.8MM/.189IN
20995	White	ABS / Gamma & EtO / 10000	CAP, MALE, BIG BORE, NON-VENTED
20608	*	PVC / Gamma & EtO / 10000	CONN, MALE DIN, FOR 6.8 MM
21364	*	ABS / EtO / 10000	CONNECTOR, LARGE BORE, MALE, 8MM
21775	Natural	ABS / * / 5000	CONNECTOR, MALE INSTILL
20433	Clear	ABS / EtO / 7000	CONNECTOR, MALE, LG BORE, FOR 5 MM TUBE
20396	*	PVC / EtO / 5000	CONNECTOR, MALE, ULTRAFILTRATION
21668	Light Blue	PVC / Gamma & EtO / 5000	DIALYZER CONNECTOR, SEMI-RIGIDTYPE, FOR 5.6 DIAMETER TUBING, NEUTRAL

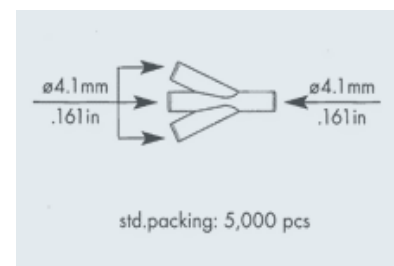


20987

* = Information Available Upon Request

Multi-Way Connectors

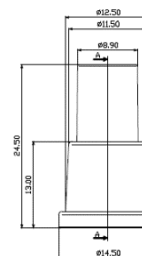
PART NUMBER	COLOR	MATERIAL/ STERILIZATION/ QUANTITY	DESCRIPTION
21641	*	PVC / EtO / 5000	4-WAY- CONNECTOR FOR 6.8MM OD TUBE, DEHP-FREE
20646	Natural	PVC / EtO / 5000	4-WAY- CONNECTOR FOR 6.8MM/.268IN OD TUBE
20460	Natural	PVC / Gamma & EtO / 5000	Y-CONN, 4-WAY, FOR 4.1 MM TUBE
20457	Clear	PVC / Gamma & EtO / 3500	Y-CONN, 4-WAY, FOR 6.8 MM TUBE, DEHP FREE
21625	*	PVC / Gamma & EtO / 22000	Y-CONN, 4-WAY, PARALLEL FOR 4.1MM OD TUBES, DEHP- FREE



20460

Pump Connectors

PART NUMBER	COLOR	MATERIAL/ STERILIZATION/ QUANTITY	DESCRIPTION
20681	Natural	PVC / EtO / 10000	PVC PUMP CONNECTOR FOR TUBE ID 7.00-OD- 10.00MM/ .276 - OD.394IN



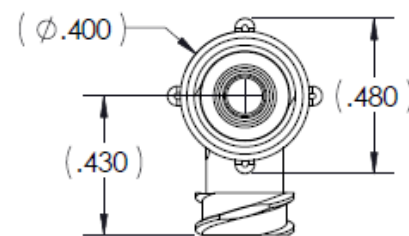
20681

* = Information Available Upon Request

20430	Blue	PVC / EtO / 2500	30 FR, CONNECTOR, SUCTION
-------	------	------------------	---------------------------

T-Connectors

PART NUMBER	COLOR	MATERIAL/ STERILIZATION/ QUANTITY	DESCRIPTION
21822	Clear	PC / Gamma & EtO / *	T CONNECTOR W/ SWIVEL NUT
14608100	Clear	PVC / EtO / 10000	T-CONN W/FEMALE LUER
21829	*	PP / Gamma & EtO / *	TEE CONNECTOR WITH 1/8" BARB
21696	Natural	PC / EtO & Steam / 1000	TEE, TUBING POCKET, FEMALE
21084	White	PVC / EtO / 5000	T-INJ SITE FOR TUBE OD 4.1MM, PROTECTIVE GRIP



21822

Y-Connectors Parallel

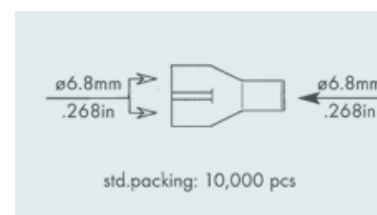
PART NUMBER	COLOR	MATERIAL/ STERILIZATION/ QUANTITY	DESCRIPTION
21650	*	PP / EtO / *	ADULT PARALLEL WYE W/GAS SAMPLING PORT, PP ASSEMBLED W/CAP AND STRAP FOR GAS SAMPLING PORT
20285	Clear	PC / Gamma & EtO / *	Y-CONN, 3-WAY, PARALLEL FOR .158 MM OD TUBE
21707	Transparent	PVC / EtO / 10000	Y-CONN, 3-WAY, PARALLEL FOR 3.28 MM OD TUBE
20288	Natural	PVC / EtO / 5000	Y-CONN, 3-WAY, PARALLEL FOR 4.1 MM OD TUBE



20288

* = Information Available Upon Request

20417	Natural	PVC / Gamma & EtO / 20000	Y-CONN, 3-WAY, PARALLEL FOR 4.1 MM OD TUBE
20388	Natural	PVC / Gamma & EtO / 10000	Y-CONN, 3-WAY, PARALLEL FOR 6.8 MM OD TUBE
20389	Natural	PVC / EtO / 10000	Y-CONN, 3-WAY, PARALLEL FOR 6.8 MM OD TUBE
21645	*	PVC / EtO / 10000	Y-CONN, 3-WAY, PARALLEL FOR 6.8 MM OD TUBE DEHP-FREE
21647	*	PVC / Gamma, Beta & EtO / 10000	Y-CONN, 3-WAY, PARALLEL FOR 6.8 MM OD TUBE, DEHP-FREE
21576	*	PVC / EtO / *	Y-CONNECTOR, PARALLEL PORTS, SOFT PVC



20388

Y-Connectors Split

PART NUMBER	COLOR	MATERIAL/ STERILIZATION/ QUANTITY	DESCRIPTION
10508000	Natural	PVC / Gamma, Beta & EtO / 4000	3-WAY Y-CONNECTOR, 265" ID
20170	Clear	ABS / Gamma & EtO / *	3-WAY Y-CONN
21618	*	PVC / EtO / *	3-WAY Y-CONNECTOR
10338000	Natural	PVC / Gamma, Beta & EtO / 10000	3-WAY Y-CONNECTOR
14838000	Natural	PVC / Gamma & EtO / 8000	3-WAY Y-CONNECTOR
21640	*	PVC / EtO / *	3-WAY Y-CONNECTOR FOR DOUBLE PUMP PVC SEGMENT 9.54MM OD, PVC, DEHP-FREE
21624	Light Blue	PVC / Gamma, Beta & EtO / 20000	3-WAY Y-CONNECTOR, NO DOP, SEMIRIGID PVC



21618

* = Information Available Upon Request

20264	Natural	PVC / EtO / 5000	4-WAY-CONNECTOR FOR 5.5MM OD TU
20641	Natural	ABS / Gamma & EtO / 10000	ASYMMETRICAL "Y", CONNECTOR, TUBE OD 4.1MM WITH FEMALE LUER LOCK
50058	Clear	PVC / EtO / 10000	CONNECTOR, Y, PLUG STYLE
21079	Natural	ABS / EtO / 10000	LONG Y-CONNECTOR W/BIG INJECTION SITE FOR TUBE OD 4.1MM
21736	Clear	PC / Gamma & EtO / 2000	SMART Y-SITE NON-DEHP
10238000	Natural	PVC / Gamma & EtO / 20000	Y-CONN, 3-WAY, FOR 4.1 MM OD
20281	Natural	PVC / EtO / 10000	Y-CONN, 3-WAY, FOR 3.0 MM OD TUBING
20235	Clear	PVC / EtO / 5000	Y-CONN, 3-WAY, FOR 6.8 MM ID TUBE
21715	Transparent	PVC / EtO / 10000	Y-CONN, 4-WAY FOR .041MM TUBE, PVC, DEHP-FREE
20282	Natural	PVC / EtO / 5000	Y-CONN, 4-WAY, FOR 4.1 MM OD TUBING
20256	Clear	PVC / EtO / 10000	Y-CONN, LUER ACTIVATED, FOR 4.1 MM OD TUBING
21077	Natural	ABS / Gamma & EtO / *	Y-CONNECTOR FOR 4.1MM TUBE WITH INJECTION PLUG, LATEX FREE
60019	Natural	PP / EtO / 10000	Y-CONNECTOR WITH 400 SERIES BA
21506	*	PVC / EtO / 2500	Y-CONNECTOR, 1/4"
21505	*	PVC / EtO / 2500	Y-CONNECTOR, 3/16"
20458	Clear	PVC / Gamma & EtO / 3500	Y-CONNECTOR, 3-WAY, FOR 6.8 MM TUBE, PVC -DEHP FREE, GAMMA

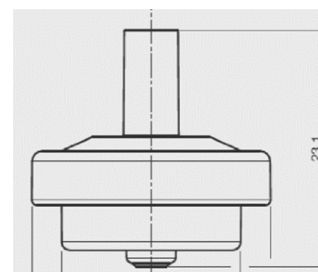


20641

Drip Chambers

Covers

PART NUMBER	COLOR	MATERIAL/ STERILIZATION/ QUANTITY	DESCRIPTION
21573	Blue	PVC / EtO / *	COVER, DRIP CHAMBER, 19M FOR TUBING OD 4.1MM



21573

Drip Chamber Assembly Vented

PART NUMBER	COLOR	MATERIAL/ STERILIZATION/ QUANTITY	DESCRIPTION
21579	Red	PVC / EtO / 1000	ASSEMBLED DRIP CHAMBER, FOR OD 4.1MM W/TWO-WAY COVER FOR TUBE OD 4.1MM
21588	*	PVC / EtO / *	ASSEMBLED DRIP CHAMBER, FOR OD 4.1MM W/TWO-WAY COVER FOR TUBE OD 4.1MM
21630	*	PVC / EtO / 700	DRIP CHAMBER 15 DROPS/ML FOR 4.1MM OF TUBING, VENTED, DEHP-FREE

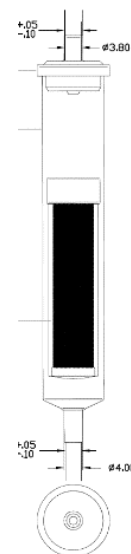


21579

* = Information Available Upon Request

Drip Chambers

PART NUMBER	COLOR	MATERIAL/ STERILIZATION/ QUANTITY	DESCRIPTION
21421	*	PVC / EtO / 500	DRIP CHAMBER 20 DROP FOR 4.1 MM OD TUBING W/ 270 UM FILTER
21586	*	PVC / EtO / 1000	DRIP CHAMBER FOR 4.1MM OD TUBE, DEHP-FREE
21639	*	PVC / Gamma, Beta & EtO / 400	DRIP CHAMBER FOR 6.8MM OD TUBE, DEHP-FREE
21466	*	PVC / EtO / 400	DRIP CHAMBER FOR 6.8MM OD TUBING
21646	*	PVC / EtO / *	DRIP CHAMBER FOR 6.8MM OD TUBING W/150 MICRON FILTER, DEHP-FREE
21643	*	PVC / EtO / 1000	DRIP CHAMBER, 20 DROP FOR 4.1MM OD TUBING, DEHP-FREE
21574	*	PVC / EtO / 1000	DRIP CHAMBER, DEHP-FREE
21479	*	PVC / EtO / *	DRIP CHAMBER, MEDIUM, DEHP FRE

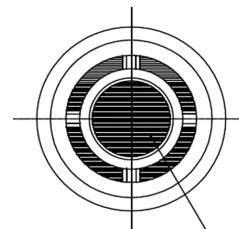


21421

Filters

Filters

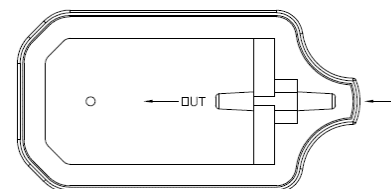
PART NUMBER	COLOR	MATERIAL/ STERILIZATION/ QUANTITY	DESCRIPTION
21188	White	PE / Gamma & EtO / 10000	ANTIBACTERIAL HYDROPHOBIC AIRFILTER I.D. 6.5MM
60025	Natural	HDPE / Gamma & EtO / 50000	FILTER, INLET
21748	Light Yellow	PI / Gamma & EtO / 50000	PLUG, D8.00/H4.00
70021	Blue	ABS / Gamma & EtO / 10000	MALE LUER W/MICROPOROUS FILTER



21188

IV Filters

PART NUMBER	COLOR	MATERIAL/ STERILIZATION/ QUANTITY	DESCRIPTION
21729	Clear	CYROLITE / Gamma & EtO / *	ADULT IV FILTER FOR 3 X 4.1 TUBE, .2 MICRON
21730	Blue	CYROLITE / Gamma & EtO / *	ADULT IV FILTER FOR 3 X 4.1 TUBE, 1.2 MICRON
21741	Clear	ACRYLIC / Gamma & EtO / *	FILTER, SPEEDFLOW ADULT IV, .2 MICRON



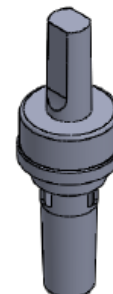
21730

* = Information Available Upon Request

Injection Sites/Ports

Luers

PART NUMBER	COLOR	MATERIAL/ STERILIZATION/ QUANTITY	DESCRIPTION
20249	Clear	BODY- PVC CAP- PP / EtO / 15000	INJ SITE, FOR 6.3 MM OD TUBING, LATEX FREE
21379	Natural	PP / Gamma & EtO / 10000	INJ SITE, W/CAP, GAMMA
20229	Clear	BODY- PVC, CAP- PP / EtO / 15000	INJECTION SITE FOR .205" FITMENT
21041	Natural	ABS / Gamma & EtO / 20000	INJECTION SITE FOR TUBE ID 4.8MM, LATEX-FREE
21372	*	KRATON / EtO / 7500	INJECTION SITE, INLINE, FLASHBACK, LATEX-FREE
21043	Natural	ABS / EtO / 10000	INJECTION SITE, MALE LUER LOCK, LATEX-FREE
20240	White	PC / Gamma & EtO / 20000	MALE LUER INJECTION SITE
20223	*	ABS / Gamma & EtO / 20000	MALE LUER LOCK INJ SITE

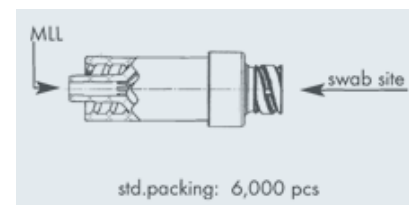


21379

* = Information Available Upon Request

Pre-Slit/Swabable Needle Free

PART NUMBER	COLOR	MATERIAL/ STERILIZATION/ QUANTITY	DESCRIPTION
21326	Clear, White	PC / EtO / *	CONNECTOR, NEEDLELESS ACCESS, WITH SWABABLE MALE LUER ACTIVATED VALVE
20408	Clear	ABS / EtO / 20000	INJ SITE, PRE-SLIT, MALE LUER LOCK, (NEEDLE FREE) LATEX FREE
21445	*	ABS / EtO / 10000	INJECTION SITE, NEEDLE-FREE FOR TUBE O.D. 4.1MM
21706	*	ABS / Gamma & EtO / 10000	INJECTION SITE, NEEDLE-FREE FOR TUBE O.D. 4.1MM
21350	Clear	ABS / EtO / 9000	INJECTION SITE, NEEDLE-FREE FOR TUBE O.D. 4.1MM (.144 MIN)
21714	Clear w/ Blue Colorant	PC / Gamma & EtO / 2000	SWABABLE SITE W/MALE SLIP, DEHP- FREE



21326

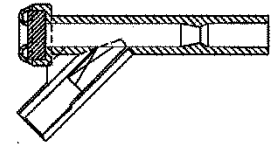


20408

* = Information Available Upon Request

Y-Site

PART NUMBER	COLOR	MATERIAL/ STERILIZATION/ QUANTITY	DESCRIPTION
20254	Clear	ABS / EtO / 10000	INJ SITE, Y, FOR 4.1 MM OD TUBING, LATEX FREE
20303	Clear	ABS / Gamma & EtO / 15000	INJ SITE, Y, W/ LUER TAPER & 4.1 MM OD TUBING, GAMMA
20125	Clear	BODY- ABS, SEPTUM- PI / Gamma & EtO / 9000	Y-SITE



20125

Luers

Female Luers

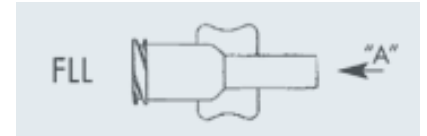
PART NUMBER	COLOR	MATERIAL/ STERILIZATION/ QUANTITY	DESCRIPTION
21302	Natural	PVC / EtO / *	FEMALE LUER LOCK ADAPTOR FOR .062 OD TUBE
21295	Natural	PC / EtO / 10000	FEMALE LUER LOCK ADAPTOR FOR .091 OD TUBE
21308	Natural	PVC / EtO / *	FEMALE LUER LOCK ADAPTOR FOR .105 OD TUBE
21309	Natural	PVC / EtO / *	FEMALE LUER LOCK ADAPTOR FOR .127 OD TUBE
21312	Natural	PVC / EtO / *	FEMALE LUER LOCK ADAPTOR FOR .143 OD TUBE
21300	Natural	PC / EtO / 10000	FEMALE LUER LOCK ADAPTOR FOR .156 OD TUBE
21301	Natural	PC / EtO / *	FEMALE LUER LOCK ADAPTOR FOR .187 OD TUBE
21315	Natural	PVC / EtO / *	FEMALE LUER LOCK ADAPTOR FOR .187 OD TUBE
21749	Clear	PC / Gamma & EtO / 1000	FEMALE LUER LOCK CONNECTOR
20151	Clear	PVC / Gamma & EtO / 22000	FEMALE LUER LOCK CONNECTOR FOR .118" TUBE OD
20464	Clear	PC / EtO / 2500	FEMALE LUER LOCK FOR .146 MM OD TUBE
26915100	Clear	PVC / Gamma & EtO / *	FEMALE LUER LOCK FOR 2 MM OD TUBING
21703	Clear	ABS / EtO / 35000	FEMALE LUER LOCK FOR 2.3 MM TUBING



21309

* = Information Available Upon Request

20317	Clear	PVC / EtO / 12800	FEMALE LUER LOCK FOR 2.5 MM ID TUBE
20374	Natural	PVC / Gamma & EtO / 10000	FEMALE LUER LOCK FOR 4.1 MM OD TUBE
20217	Clear	PC / Gamma & EtO / *	FEMALE LUER LOCK FOR 4.75 MM TUBING
20275	Clear	PC / Gamma & EtO / 20000	FEMALE LUER LOCK FOR 5.5 MM OD TUBING
20558	Natural	PVC / Gamma & EtO / 10000	FEMALE LUER LOCK FOR 6.8 MM OD TUBE
21456	*	PVC / Gamma & EtO / *	FEMALE LUER LOCK FOR ID TUBE FIT, 3.91-4.88 MM TAPER
20407	Natural	PVC / EtO / 10000	FEMALE LUER LOCK FOR TUBE O.D. 2.0MM.
20354	Natural	PVC / Gamma & EtO / 10000	FEMALE LUER LOCK FOR TUBE OD 5.5MM, DEHP-FREE
20248	Natural	PC / EtO / 2500	FEMALE LUER LOCK FOR TUBE OD 6.8MM, DEHP-FREE
21754	Blue	PVC / Gamma & EtO / 25000	FEMALE LUER LOCK W/BREAKABLE SEAL
21638	Blue	PVC / EtO / 10000	FEMALE LUER LOCK W/WINGS FOR .120/.150 ID
21461	Blue	PVC / EtO / *	FEMALE LUER LOCK WINGED, 5.0 MM OD TUBE
21644	*	PVC / EtO / 10000	FEMALE LUER WITH CAP, RECIRCULATING
20398	Natural	PC / Gamma & EtO / 25000	FEMALE LUER, FOR .158 X .164 ID BOND
20379	Natural	PC / Gamma & EtO / 7200	LUER LOCK, FEMALE, FOR 4.1 MM OD TUBING
20230	Clear	PVC / EtO / 10000	
21380	*	PP / EtO / 8000	
21457	*	PC / EtO / *	
26935100	*	PVC / Gamma & Beta / 25000	



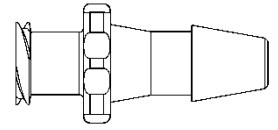
20317

* = Information Available Upon Request

26938400	*	ABS / Gamma & EtO / 25000	LUER LOCK, FEMALE, FOR 4.1 MM OD TUBING
----------	---	---------------------------	---

Barbed Female Luers

PART NUMBER	COLOR	MATERIAL/ STERILIZATION/ QUANTITY	DESCRIPTION
21828	*	PP / Gamma & EtO / *	FEMALE LUER LOCK TO 5/32" BARB
21532	*	PP / EtO / 1000	FEMALE LUER LOCK TO BARB FOR 1/16" ID TUBE
21555	*	PC / EtO / 10000	FEMALE LUER LOCK TO BARB FOR 1/4" ID TUBE
21533	*	PP / EtO / 1000	FEMALE LUER LOCK TO BARB FOR 1/8" ID TUBE
21551	*	PC / EtO / 10000	FEMALE LUER LOCK TO BARB FOR 1/8" ID TUBE
21411	*	NYLON / EtO / *	FEMALE LUER LOCK TO BARB FOR 3/16" ID TUBE
21546	*	PC / EtO / 10000	FEMALE LUER LOCK TO BARB FOR 3/16" ID TUBE



21411

Locking Rings

PART NUMBER	COLOR	MATERIAL/ STERILIZATION/ QUANTITY	DESCRIPTION
21789	White	ZYTEL / * / *	FINGER SNAP LUER LOCK RING
20518	Natural	PP / EtO / 30000	LOCK RING
21739	Natural	PC / Gamma, EtO & Steam / 10000	MALE LUER INTEGRAL LOCK RING PLUG, CLOSED AT GRIP



std packing: 30,000 pcs

20518

* = Information Available Upon Request

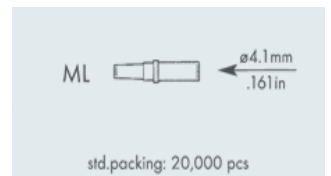
21738	Natural	PC / Gamma, EtO & Steam / 10000	MALE LUER INTEGRAL LOCK RING TO FEMALE LUER THREAD-STYLE COUPLER
20441	*	PVC / Gamma & EtO / 10000	MALE LUER LOCK COUPLING FOR 4.1 & 6.8 OD TUBE
21699	Natural	PC / EtO & Steam / 500	MALE LUER SLIP COUPLER
18208502	Clear	PS / EtO / 30000	RING, FOR COUPLING LUER LOCK
20349	Natural	ABS / Gamma & EtO / 30000	ROTATING COUPLING



18208502

Male Luers

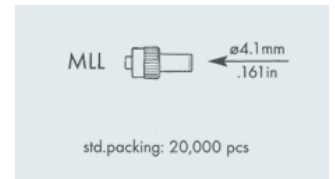
PART NUMBER	COLOR	MATERIAL/ STERILIZATION/ QUANTITY	DESCRIPTION
21279	Natural	ACRYLIC / EtO / *	ADAPTOR, MALE LUER LOCK 2.92/2.67MM/.115/.105IN
20506	Natural	PE / EtO / 10000	COVER, VENTED, MALE LUER LOCK
20589	White	ABS / EtO / 20000	DOUBLE MALE LUER CONNECTOR
20253	Natural	ABS / EtO / 20000	MALE LUER CONNECTOR FOR TUBE O.D. 4.1MM
20219	Clear	ABS / Gamma & EtO / 20000	MALE LUER LOCK
21675	Natural	HDPE / EtO / 15000	
21767	Transparent	ABS / Gamma & EtO / 10000	
21276	Natural	ACRYLIC / EtO / *	MALE LUER LOCK ADAPTOR FOR .088 OD TUBE
21277	Natural	ACRYLIC / EtO / *	MALE LUER LOCK ADAPTOR FOR .095 OD TUBE



20253

* = Information Available Upon Request

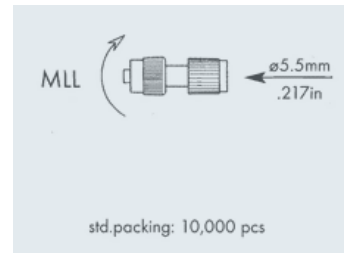
21282	Natural	ACRYLIC / EtO / *	MALE LUER LOCK ADAPTOR FOR .143 OD TUBE
21285	Natural	ACRYLIC / EtO / *	MALE LUER LOCK ADAPTOR FOR .156 OD TUBE
21287	Natural	ACRYLIC / EtO / *	MALE LUER LOCK ADAPTOR FOR .173 OD TUBE
21288	Natural	ACRYLIC / EtO / 20000	MALE LUER LOCK ADAPTOR, 4.88/4.62MM/.192/.182IN, CRYOLITE G-20
21821	White	ACRYLIC / Gamma & EtO / *	MALE LUER LOCK BOND -IN PORT .192/.182
20204	Clear	ABS / EtO / 30000	MALE LUER LOCK CONNECTOR
21750	Clear	PC / Gamma & EtO / 1000	
20280	Natural	ABS / Gamma & EtO / 10000	MALE LUER LOCK FOR 3.0 MM OD TUBING
20265	Natural	ABS / Gamma & EtO / 20000	MALE LUER LOCK FOR 4.1 MM OD TUBING
20432	Natural	PC / Gamma & EtO / 6000	
20415	*	ACRYLIC / Gamma & EtO / 10000	
70037	Natural	HDPE / Gamma & EtO / 7500	MALE LUER LOCK FOR 4.1 MM TUBE, ROTATING W/ CAP, ASSEMBLED
70093	Red	HDPE / Gamma & EtO / *	MALE LUER LOCK FOR 4.1 MM TUBE, ROTATING W/RED CAP, ASSEMBLED
20276	Clear	PC / Gamma & EtO / 5000	MALE LUER LOCK FOR 4.75 MM OD TUBING
20528	Natural	ABS / EtO / 20000	MALE LUER LOCK FOR 5.5 MM OD TUBING
20412	Natural	ABS / Gamma & EtO / 20000	MALE LUER LOCK FOR 6.8 MM OD TUBING
21669	Blue	PVC / EtO / 20000	



20265

* = Information Available Upon Request

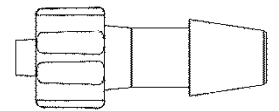
21407	*	ABS / EtO / *	MALE LUER LOCK FOR TUBE 3.2MM OD AND 6.0MM
20363	Natural	ABS / Gamma & EtO / 10000	MALE LUER LOCK FOR TUBE 4.1 MM OD, ROTATING
21601	Clear	PC / EtO / 5000	MALE LUER LOCK WITH TUBING POCKET .108-.114
21540	*	PC / EtO / 10000	MALE LUER W/ ROTATING RING FOR 1/4" ID TUBE
21606	*	ABS / EtO / 5000	
21398	*	ABS / EtO / 10000	ROTATING MALE LUER LOCK
21635	Blue	PVC / EtO / 10000	ROTATING MALE LUER LOCK FOR 6.8MM OD TUBE, SELF-EJECTING, DEHP-FREE
21636	Red	PVC / Gamma & EtO / 10000	ROTATING MALE LUER LOCK FOR TUBE O.D. 3.0MM .118IN
20502	Red	ABS / Gamma & EtO / 10000	ROTATING MALE LUER LOCK FOR TUBE OD 5.5MM



20491

Barbed Male Luers

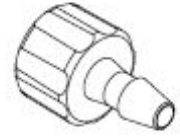
PART NUMBER	COLOR	MATERIAL/ STERILIZATION/ QUANTITY	DESCRIPTION
21698	White	PP / EtO / 10000	BARB LOCK
21697	Natural	PC / EtO & Steam / 1000	MALE LUER SLIP TO BARB
21788	White	ZYTEL / * / *	MALE LUER TO 500 SERIES BARB, 3/32" (2.4 MM) ID TUBING
21499	*	PC / EtO / *	MALE LUER LOCK TO BARB FOR 1/4" ID TUBE
21554	*	PC / EtO / 10000	



21499

* = Information Available Upon Request

21820	E-Beam, White	PC / Gamma, EtO & E-Beam / 10000	MALE LUER LOCK TO BARB FOR 3/16" ID TUBE
21547	*	PC / EtO / 10000	MALE LUER LOCK TO BARB FOR 5/32" ID TUBE
21545	*	PC / EtO / *	
21534	*	PP / EtO / 1000	MALE LUER LOCK TO BARB FOR 1/8" ID TUBE
21550	*	PC / EtO / 10000	
21659	*	PC / Gamma & EtO / 10000	
21662	*	PC / Gamma & EtO / 5000	
21663	*	PP / Gamma & EtO / 10000	



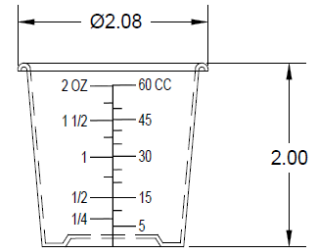
21499

* = Information Available Upon Request

Other

Cups

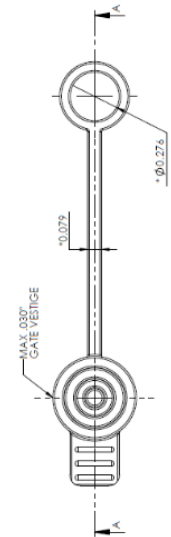
PART NUMBER	COLOR	MATERIAL/ STERILIZATION/ QUANTITY	DESCRIPTION
20244	Clear	PP / EtO / 1380	CUP, 60 CC, CLEAR
20294	Red	PP / EtO / 1380	CUP, MEDICINE, 60 CC
20295	Yellow	PP / EtO / 1380	CUP, MEDICINE, 60 CC



20244

Other

PART NUMBER	COLOR	MATERIAL/ STERILIZATION/ QUANTITY	DESCRIPTION
21774	*	PVC / * / 1000	CAP TETHER
60015	Clear, Blue	PVC / * / 10000	CARTRIDGE, L-370
21658	Natural, Red	PC / EtO / 1000	LAL-TOUHY, ANGIOVAC
21409	*	PP / EtO / 160000	STOPPLE
21653	Red	PE / EtO / *	T-4 REC-GATE PE- LD01, RED017
21654	*	PVC / EtO / 6000	TUBE W/MEMBRANE FOR 5.0MM OD TUBES



21774

* = Information Available Upon Request

Pillow Chambers

Pillow Chambers

PART NUMBER	COLOR	MATERIAL/ STERILIZATION/ QUANTITY	DESCRIPTION
21678	*	PVC / EtO / 2000	PILLOW CHAMBER, DOUBLE-TUBE, 6 X 7 CM, 1.2 ML VOLUME, NO-DOP
21695	*	PVC / EtO / 1000	PILLOW CHAMBER W/ONE WAY VALVE AND PRINTED ARROW, OD 6.8MM
21261	Red	PVC / EtO / 1000	PILLOW, CHAMBER, SINGLE TUBE, 6.8MM, 4ML, PRINTED
21359	*	PVC / EtO / 1500	PILLOW, PRINTED, ONE TUBE, 3ML
21360	*	PVC / EtO / 1000	PILLOW, PRINTED, TWO TUBE



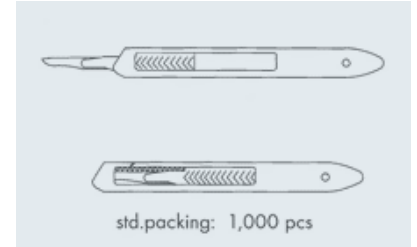
21678

* = Information Available Upon Request

Safety Products

Scalpels

PART NUMBER	COLOR	MATERIAL/ STERILIZATION/ QUANTITY	DESCRIPTION
20270	Blue	PE / EtO / 3000	SAFETY SCALPEL, #11

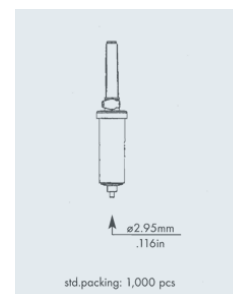


20270

Chambers

Chamber Assemblies

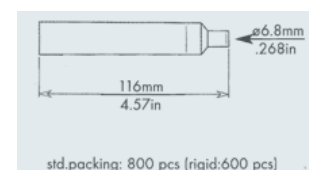
PART NUMBER	COLOR	MATERIAL/ STERILIZATION/ QUANTITY	DESCRIPTION
21740	White	ABS / Gamma & EtO / *	INFUSION CHAMBER W/O SOLUTION FILTER, DEHP-FREE
30127	Clear, White	PVC, ABS	VENTED INFUSION CHAMBER 20 DROP, WITH CAP



30127

Chamber Bodies

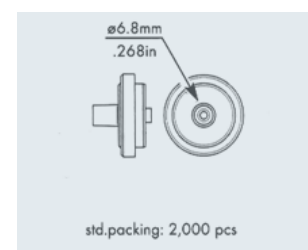
PART NUMBER	COLOR	MATERIAL/ STERILIZATION/ QUANTITY	DESCRIPTION
20234	Clear	PVC / EtO / 800	CHAMBER FOR 6.8MM TUBE



20234

Chamber Caps

PART NUMBER	COLOR	MATERIAL/ STERILIZATION/ QUANTITY	DESCRIPTION
20399	Natural	PVC / EtO / 2000	CAP, DRIP CHAMBER, LG, PVC, FOR 6.8 MM OD TUBE
21587	*	PVC / EtO / 5000	2-WAY COVER FOR TUBE OD 4.1MM, DEHP-FREE
70002	*	* / Gamma & EtO / 2500	CAP STRAP ASSEMBLY
20402	*	PVC / Gamma & EtO / 5000	CAP, DRIP CHAMBER, 1 PORT, FOR 4.1 MM OD TUBE



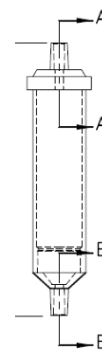
20399

* = Information Available Upon Request

21375	Blue	PVC / EtO / *	CAP, DRIP CHAMBER, FOR 4.1MM OD TUBE
21427	*	PVC / EtO / *	COVER, ONE-WAY, FOR DRIP CHAMBER, 30MM FOR TUBE OD 6.8MM

Drip Chamber Assembly Non-Vented

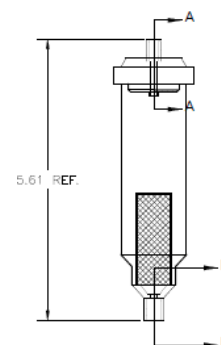
PART NUMBER	COLOR	MATERIAL/ STERILIZATION/ QUANTITY	DESCRIPTION
20467	*	PVC / Gamma & EtO / 1000	DRIP CHAMBER, ASSY, SMALL, W/O FILTER



20467

Drip Chamber Assembly Vented

PART NUMBER	COLOR	MATERIAL/ STERILIZATION/ QUANTITY	DESCRIPTION
20462	*	PVC / EtO / 400	DRIP CHAMBER ASSY W/150 MICRON
30192	Red	PVC / Gamma & EtO / *	DRIP CHAMBER, 1-2-WAY SMALL, ASSEMBLED, NO DOP
21762	*	PVC / EtO / 1000	TRANSFUSION DRIP CHAMBER ASSEMBLY (200 MICRON) PVC NO-DOP
21771	White	ABS, LDPE, PVC / Gamma & EtO / 1000	VENTED INFUSION DRIP CHAMBER ASSEMBLY W/FILTER

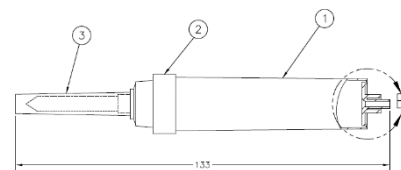


20462

* = Information Available Upon Request

Drip Chamber Assembly with Spike Non-Vented

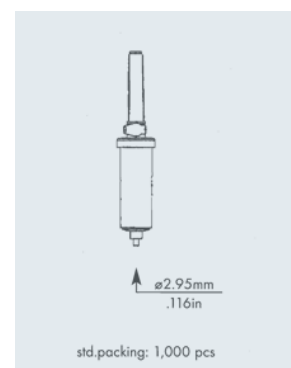
PART NUMBER	COLOR	MATERIAL/ STERILIZATION/ QUANTITY	DESCRIPTION
30138	Clear	CHAMBER- PVC, SPIKE- ABS CAP- LDPE / Gamma & EtO / *	NON-VENTED 15 DROP/ML SPIKE DRIP CHAMBER, IV TUBING FIT LONG



30138

Drip Chamber Assembly with Spike Vented

PART NUMBER	COLOR	MATERIAL/ STERILIZATION/ QUANTITY	DESCRIPTION
21792	White	PE / Gamma & EtO / *	15 DROP, UNIVERSAL SPIKE DRIP
30200	Red	PVC / Gamma & EtO / 1000	ASSEMBLED DRIP CHAMBER W/SPIKE AND CAP, DEHP-FREE
21252	Clear	CHAMBER-PVC SPIKE-ABS HOUSING-PE CAP/SPIKE- LDPE / EtO / 800	DRIP CHAMBER, 15 DROP, W/SPIKE, VENTED, W/CAP
30127	*	PVC / Gamma & EtO / 1000	VENTED DRIP CHAMBER 20 DROP, W/SPIKE, W/CAP
30125	*	CHAMBER-PVC, SPIKE- ABS HOUSING- PE CAP,SPIKE- LDPE / Gamma & EtO / 700	DRIP CHAMBER, VENTED, 10 DROP/ML FOR 4.1MM OD TUBING
30197	Clear, Natural	CHAMBER- PVC, SPIKE- ABS CAP- LDPE / EtO / 700	DRIP CHAMBER, VENTED, 20 DPM, DEHP-FREE
30100	*	CHAMBER-PVC SPIKE- ABS HOUSING- PE CAP,SPIKE- LDPE / Gamma & EtO / 700	DRIP CHAMBER, VENTED, 60 DROP/+B525ML FOR 4.1MM OD TUBING



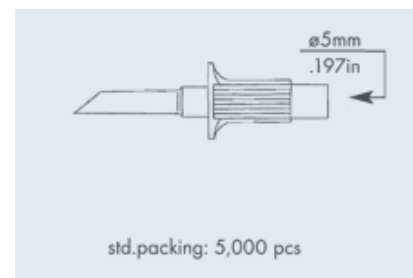
30127

* = Information Available Upon Request

Spikes

Non-Vented Spikes

PART NUMBER	COLOR	MATERIAL/ STERILIZATION/ QUANTITY	DESCRIPTION
20241	White	ABS / Gamma & EtO / 5000	SPIKE, NON-VENTED, FOR 6.8MM OD TUBE
21167	White	ABS / EtO / 5000	NON-VENTED BLOOD SPIKE FOR DRIP CHAMBERS
21170	White	PE / EtO / 5000	NON-VENTED BLOOD SPIKE FOR DRIP CHAMBERS, ISO TYPE
20112	White	ABS / Gamma & EtO / 3800	NON-VENTED SPIKE FOR .161" OD TUBE
20341	White	ABS / Gamma & EtO / 3000	SPIKE FOR DRIP CHAMBER, NON-VENTED
20958	White	ABS / Gamma & EtO / 5000	SPIKE, NON-VENTED FOR 4.1 MM TUBE, LG FLANGE
20960	White	ABS / EtO / 5000	SPIKE, NON-VENTED FOR 5.5 MM ID TUBE
20114	White	ABS / Gamma & EtO / 4000	SPIKE, NON-VENTED, ABS, FOR .161" OD TUBE
18808403	*	ABS / Gamma & EtO / 5000	SPIKE, NON-VENTED, FOR 4.1MM OD TUBE
20301	White	ABS / EtO / 5000	SPIKE, NON-VENTED, FOR 5.0 MM OD TUBING
18708403	*	ABS / Gamma & EtO / 5000	SPIKE, NON-VENTED, FOR 5.5 MM OD TUBE
21629	Yellow	ABS / Gamma & EtO / 2500	1-WAY SPIKE WF/ LARGE FLANGE FOR 4.1MM ID TUBING AND 4.8MM OD TUBING
21429	*	LDPE / EtO / 2000	SPIKE AND CAP ASSEMBLY



20301

* = Information Available Upon Request

Spike Caps

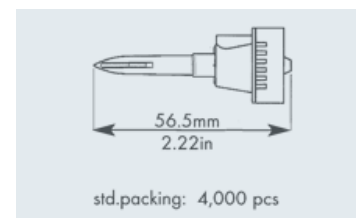
PART NUMBER	COLOR	MATERIAL/ STERILIZATION/ QUANTITY	DESCRIPTION
21816	White	ABS / * / 5000	ABS ISO SPIKE
20111	Clear	LDPE / Gamma & EtO / 10000	VENTED CAP, SPIKE
20385	White	PE / Gamma & EtO / 15000	VENTED COVER FOR SPIKES
20966	Natural	PE / Gamma & EtO / 10000	VENTED COVER FOR SPIKES
20967	Red		
20968	Blue		



20385

Vented Spikes

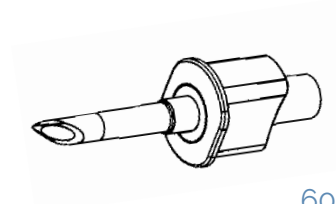
PART NUMBER	COLOR	MATERIAL/ STERILIZATION/ QUANTITY	DESCRIPTION
20231	White	CAP- PE, VENTED SPIKE- ABS, AIR CAP- PP / Gamma & EtO / 4000	SPIKE, VENTED W/CAP, FEMALE LUER LOCK W/ UNIVERSAL VENTED CAP, 2-WAY
28709900SM	White	ABS / Gamma & EtO / 4000	SPIKE, VENTED, W/CAP, FOR 4.1 MM OD TUBE
30154	White	ABS / Gamma & EtO / 3000	SPIKE, W/VENTED CAP, 3 X 4.1 & 4.8 X 6.8 MM TUBING
21160	Natural	PVC / Gamma & EtO / *	VENTED SPIKE FOR DRIP CHAMBER
30103	*	CAP- LDPE SPIKE- ABS FILTER- HDPE / Gamma & EtO / 1500	VENTED SPIKE W/ 1.2 MICRON FILTER



21160

* = Information Available Upon Request

60027	*	ACRYLIC, CRYOLITE / Gamma & EtO / 4000	SPIKE FOR .250" OD TUBING
21590	Blue	ABS / EtO / 2000	SPIKE FOR A 4.1MM OD TUBE, W/ COVER, VENTED, ASSEMBLED
21612	White	ABS / EtO / 5000	SPIKE FOR A 4.1MM OD TUBING W/COVER, VENTED, ASSEMBLED
30103	*	CAP- LDPE SPIKE- ABS FILTER- HDPE / Gamma & EtO / 1500	VENTED SPIKE W/ 1.2 MICRON FILTER

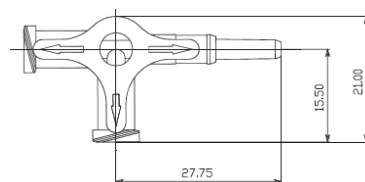


60027

Stopcocks

Multi-Way

PART NUMBER	COLOR	MATERIAL/ STERILIZATION/ QUANTITY	DESCRIPTION
21661	Natural	NYLON / EtO / 5000	LOCKING MALE X FEMALE X FEMALE 4-WAY STOPCOCK
21425	*	PC / EtO / *	STOPCOCK, 1-WAY MALE LUER SLIP, FEMALE LUER LOCK, W/NON-VENTED CAP
21352	*	PC / EtO / 5000	STOPCOCK, 1-WAY, HI-FLOW W/FEMALE LUER + MALE LUER W/LOCKING RING
21184	Natural	PC / EtO / *	STOPCOCK, 3-WAY, FEMALE LUER LOCK 2-WAY, 1-WAY FOR TUBE I.D. 3.0MM/.118IN
21478	*	PSU / EtO / 3000	STOPCOCK, 3-WAY, HI-FLOW
20266	Clear, White	POLYSULFONE / Gamma & EtO / 1000	STOPCOCK, 3-WAY, HI-FLOW, 2 FEMALE, 1 MALE W/LOCK, GAM



21184

* = Information Available Upon Request

Transducer Protectors

Transducer Protectors

PART NUMBER	COLOR	MATERIAL/ STERILIZATION/ QUANTITY	DESCRIPTION
20905	Natural	PVC / Gamma & EtO / 5000	MALE LUER LOCK (TRANSDUCER PROTECTOR) & FEMALE LUER LOCK (MEMBRENS .20 MICRON)
20377	Neutral	PVC / Gamma & EtO / 8000	TRANSDUCER PROTECTOR
20903	Clear	PVC / EtO / 5000	TRANSDUCER PROTECTOR, MALE & FEMALE LUER LOCK, GORE MEMBRANE 0.20
21268	Natural	PVC, PTFE, POLYESTER / EtO / *	TRANSDUCER PROTECTOR FOR OD 5.5MM TUBE FITMENT



20903

* = Information Available Upon Request

Index

1

10238000, 28
 10338000, 27
 10508000, 27
 10718000, 25
 14608100, 26
 14838000, 27
 18208502, 38
 18708403, 48
 18808403, 48
 18908200, 11

2

200320, 15
 20111, 49
 20112, 48
 20114, 48
 20125, 34
 20151, 35
 20170, 27
 20204, 39
 20217, 36
 20219, 38
 20220, 11
 20221, 20
 20223, 32
 20227, 20
 20228, 20
 20229, 32
 20230, 36
 20231, 49
 20234, 45
 20235, 28
 20238, 15
 20239, 15
 20240, 32
 20241, 48
 20244, 42
 20248, 36
 20249, 32
 20252, 16
 20253, 38
 20254, 34
 20255, 11
 20256, 28
 20260, 16
 20261, 16

20262, 15
 20264, 28
 20265, 39
 20266, 51
 20270, 44
 20275, 36
 20276, 39
 20280, 39
 20281, 28
 20282, 28
 20285, 26
 20287, 22
 20288, 26
 20289, 23
 20290, 22
 20291, 18
 20294, 42
 20295, 42
 20301, 48
 20303, 34
 20305, 13
 20308, 11
 20310, 16
 20311, 18
 20317, 36
 20320, 25
 20326, 9
 20337, 17
 20341, 48
 20346, 17
 20347, 17
 20349, 38
 20354, 36
 20356, 8
 20363, 40
 20373, 9
 20374, 36
 20377, 52
 20379, 36
 20384, 10
 20385, 49
 20388, 27
 20389, 27
 20390, 11
 20391, 20
 20396, 23
 20398, 36
 20399, 45

* = Information Available Upon Request

20401, 18	20958, 48
20402, 45	20960, 48
20404, 16	20966, 49
20407, 36	20967, 49
20408, 33	20968, 49
20412, 39	20987, 23
20415, 39	20990, 22
20417, 27	20992, 22
20429, 25	20995, 23
20430, 26	21016, 21
20432, 39	21041, 32
20433, 23	21043, 32
20434, 22	21077, 28
20436, 14	21079, 28
20441, 38	21084, 26
20445, 12	21160, 49
20447, 8	21167, 48
20448, 8	21170, 48
20449, 10	21175, 11
20450, 10	21184, 51
20457, 24	21188, 31
20458, 28	21192, 17
20459, 10	21198, 17
20460, 24	21225, 19
20462, 46	21226, 19
20464, 35	21252, 47
20467, 46	21261, 43
20474, 9	21265, 19
20476, 11	21267, 17
20479, 8	21268, 52
20480, 9	21276, 38
20491, 40	21277, 38
20502, 40	21279, 38
20506, 38	21282, 39
20518, 37	21285, 39
20528, 39	21287, 39
20558, 36	21288, 39
20573, 10	21295, 35
20589, 38	21300, 35
20602, 22	21301, 35
20608, 23	21302, 35
20623, 10	21308, 35
20625, 8	21309, 35
20641, 28	21312, 35
20646, 24	21315, 35
20681, 24	21326, 33
20717, 18	21334, 10
20719, 18	21337, 15
20722, 15	21338, 15
20724, 15	21342, 9
20725, 15	21346, 8
20903, 52	21350, 33
20905, 52	21352, 51

* = Information Available Upon Request

21359, 43	21548, 25
21360, 43	21550, 41
21363, 22	21551, 37
21364, 23	21554, 40
21372, 32	21555, 37
21375, 46	21557, 25
21376, 9	21560, 11
21379, 32	21564, 17
21380, 36	21573, 29
21385, 22	21574, 30
21386, 10	21576, 27
21398, 40	21579, 29
21404, 16	21584, 14
21407, 40	21586, 30
21408, 11	21587, 45
21409, 42	21588, 29
21410, 11	21589, 25
21411, 37	21590, 50
21413, 15	21599, 9
21414, 16	21601, 40
21421, 30	21602, 25
21423, 14	21606, 40
21424, 6	21607, 25
21425, 51	21608, 16
21427, 46	21610, 13
21429, 48	21611, 15
21445, 33	21612, 50
21454, 14	21613, 9
21456, 36	21618, 27
21457, 36	21622, 10
21459, 8	21624, 27
21461, 36	21625, 24
21462, 25	21626, 15
21463, 25	21627, 15
21466, 30	21628, 25
21478, 51	21629, 48
21479, 30	21630, 29
21499, 40	21634, 9
21505, 28	21635, 40
21506, 28	21636, 40
21508, 14	21637, 9
21517, 11	21638, 36
21518, 11	21639, 30
21528, 12	21640, 27
21530, 17	21641, 24
21531, 20	21643, 30
21532, 37	21644, 36
21533, 37	21645, 27
21534, 41	21646, 30
21540, 40	21647, 27
21545, 41	21650, 26
21546, 37	21651, 15
21547, 41	21652, 15

* = Information Available Upon Request

21653, 42	21767, 38
21654, 42	21768, 7
21658, 42	21770, 15
21659, 41	21771, 46
21661, 51	21774, 42
21662, 41	21775, 23
21663, 41	21786, 13
21667, 22	21788, 40
21668, 23	21789, 37
21669, 39	21790, 9
21672, 8	21791, 17
21673, 8	21792, 47
21675, 38	21794, 12
21677, 10	21816, 49
21678, 43	21820, 41
21681, 25	21821, 39
21682, 9	21822, 26
21694, 14	21823, 12
21695, 43	21824, 12
21696, 26	21825, 12
21697, 40	21826, 21
21698, 40	21828, 37
21699, 38	21829, 26
21700, 19	21836, 11
21702, 20	21841, 19
21703, 35	21842, 19
21705, 11	21843, 19
21706, 33	21844, 19
21707, 26	21867, 8
21714, 33	25818200, 11
21715, 28	26808000, 22
21722, 20	26915100, 35
21723, 10	26935100, 36
21727, 13	26938400, 37
21729, 31	28709900SM, 49
21730, 31	
21733, 20	3
21736, 28	30100, 47
21738, 38	30103, 49, 50
21739, 37	30125, 47
21740, 45	30127, 47
21741, 31	30138, 47
21748, 31	30154, 49
21749, 35	30168-01, 17
21750, 39	30168-02, 17
21754, 36	30170, 17
21755, 12	30192, 46
21758, 20	30197, 47
21760, 20	30200, 47
21762, 46	33508200, 10
21764, 18	34418403, 10
21765, 17	37018, 17
21766, 17	37618000, 20

* = Information Available Upon Request

5

50058, 28

6

60007, 11
60013, 18
60014, 20
60015, 42
60016, 12
60017, 19
60018, 20
60019, 28
60024, 19
60025, 31
60026-01, 25
60027, 50
60028, 21
60029, 16, 18
60030, 21
60034, 16
60035, 16
60036, 16
60037, 16

60038, 16
60044, 16
60048, 13
60066, 21
60070, 21
60072, 21
60074, 15

7

70002, 45
70006, 6
70020, 6
70021, 31
70037, 39
70093, 39

8

8107152, 19
8109789000, 11
8305170000, 11

C

C033408403, 10